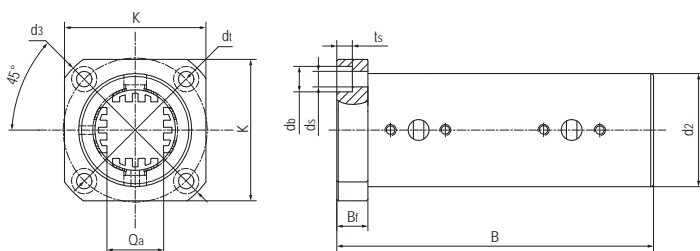


### LIN-12QRTL 加长型方法兰直线轴承 Linear bearings with square flange, Long design



- 封闭式方法兰加长设计
  - 装配2个LIN-12Q滑动膜
  - 阳极氧化铝合金适配器
  - 承受扭矩高达 10 Nm
  - 免维护、低噪音
  - 适用于污垢或灰尘环境
  - 使用温度 -50℃/+90℃
- Closed design with square flange
  - Assembled 2pcs liners LIN-12Q
  - Anodized aluminum adapter
  - Torque absorption up to 10 Nm
  - Maintenance-free and low noise
  - Resistance to dirt and dust
  - Operation temperature -50℃/+90℃

### 标准规格 Standard specifications



产品编码 Part No.:

LIN-12QRTL-20

- 内孔尺寸 Inner dimension
- 方法兰加长型保持器 Angular flang aluminum adapter (long design)
- LIN-12Q 标准滑动膜 Standard liners LIN-12Q

轴 Shaft: h6-h9

产品编码 Part No.	K [mm]	d <sub>2</sub> [mm]	B <sub>f</sub> [mm]	O <sub>a</sub> [mm]	d <sub>3</sub> [mm]	d <sub>1</sub> [mm]	B [mm]	d <sub>s</sub> [mm]	d <sub>b</sub> [mm]	t <sub>s</sub> [mm]
LIN-12QRTL-20	50	40	11	20	62	51	112	5.5	9	5.5

产品编码 Part No.	内孔尺寸 Inner dimension [mm]	F max. [N] 最大动载荷 Dynamic Load P=5MPa	F max. [N] 最大静载荷 Static Load P=35MPa	最大扭矩 Max. torque [Nm]	重量 Weight [g]
LIN-12QRTL-20	20	3200	23000	10	231